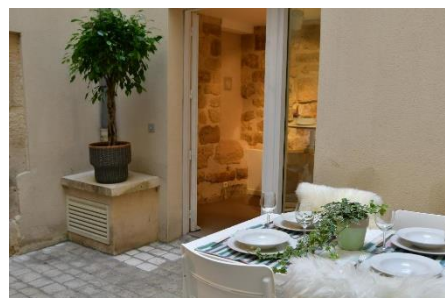
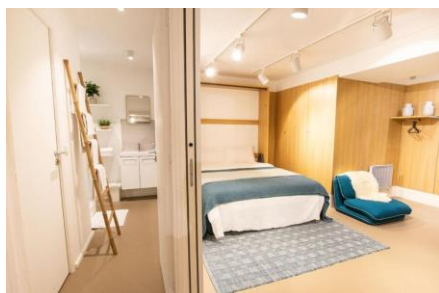


SUMMER PROGRAM



MY STORY UP, PARIS, FRANCE

Paris, the capital of France, is located in the north-central part of the country on a loop of the Seine River, creating the Left Bank and the Right Bank. The city is renowned for its famous museums such as the Louvre, the Musée d'Orsay, and the Centre Pompidou, as well as its iconic architecture, from Gothic buildings like Notre-Dame to modern structures like the Eiffel Tower. As the fashion capital, it hosts influential Fashion Weeks and is home to haute couture houses such as Chanel, Dior, and Louis Vuitton. Paris is also famous for its refined cuisine, with Michelin-starred restaurants, picturesque cafés, and fresh produce markets. The city is the home of many famous writers and thinkers, offering a wide range of cultural activities, from performances at the Opéra Garnier to music and film festivals, and boasts a lively nightlife with its bars, clubs, and renowned cabarets like the Moulin Rouge.

PLACES OF INTEREST:

The Louvre Museum (800m): Located nearby, it is one of the most famous art museums in the world, housing works like the Mona Lisa and the Venus de Milo.

The Tuileries Garden (1.2km): A beautiful open-air park where you can relax and enjoy nature in the heart of Paris.

Place de la Concorde (2km): A historic square with the Luxor Obelisk at its center, offering stunning views of the Arc de Triomphe.

The Conciergerie (1.1km): A former royal palace turned prison during the French Revolution, now a museum.

The Pont des Arts (1.2km): An iconic bridge over the Seine, known for its love locks.

Place Vendôme (1.5km): A prestigious square with grand hotels and the Vendôme Column.

The Palais Royal and its garden (1.3km): A historic site with shopping arcades and a charming garden.

Notre-Dame de Paris (1.9km): Notre-Dame de Paris is an iconic cathedral located on the Île de la Cité.

Luxembourg Garden (2.5km): The Luxembourg Garden is a beautiful park in the 6th arrondissement, known for its well-maintained gardens, fountains, and the Luxembourg Palace.

Eiffel Tower (5.4km): The Eiffel Tower is one of the most famous monuments in Paris, located on the Champ de Mars.

The Musée d'Orsay (2.5km): Housed in a former train station, this museum features an impressive collection of Impressionist and Post-Impressionist works, including masterpieces by Monet, Van Gogh, and Degas.

The Palais Garnier - Opéra de Paris (1.8km): A magnificent opera house built in the 19th century, famous for its elegant architecture and performances of ballet and opera.

The Latin Quarter (1.9km): A historic neighborhood known for its picturesque streets, bookstores, and lively cafés.

Montmartre (5.3km): A bohemian district famous for its cobblestone streets, street artists, and the Basilica of the Sacred Heart, which offers panoramic views of Paris.





DESCRIPTION OF THE APARTMENT

This apartment can accommodate **up to 4 people**. Bath towels, kitchen towels, bed linens and sheets are provided. WIFI is not included.

Airports: Orly Airport (ORY) (14 km) / Charles de Gaulle Airport (CDG) (23.1 km) from Paris.

Equipment included in the apartment:

- **Kitchen:** Well-equipped with a stove, microwave, refrigerator, coffee machine, toaster, kettle, etc.
- **Living/Dining Room:** Table and chairs.
- **Bedroom 1:** Large double bed.
- **Bedroom 2:** Large double bed.
- **Bathroom:** Shower, sink, toilet, hairdryer.
- **Terrace:** Table and 4 chairs.

PLEASE NOTE :

Check-in: Friday between 3:00 PM and 8:00 PM.

Check-out: Monday between 8:00 AM and 11:00 AM.

Contact:

- Mrs. Marion Rosso
- Cellphone: +33 6 46 66 67 81

Email: mrosso.consult@gmail.com

